



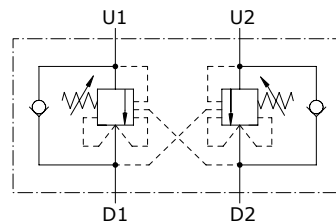
## Type VODL/SC/CC counterbalance valves

- Double acting
- Relief compensated

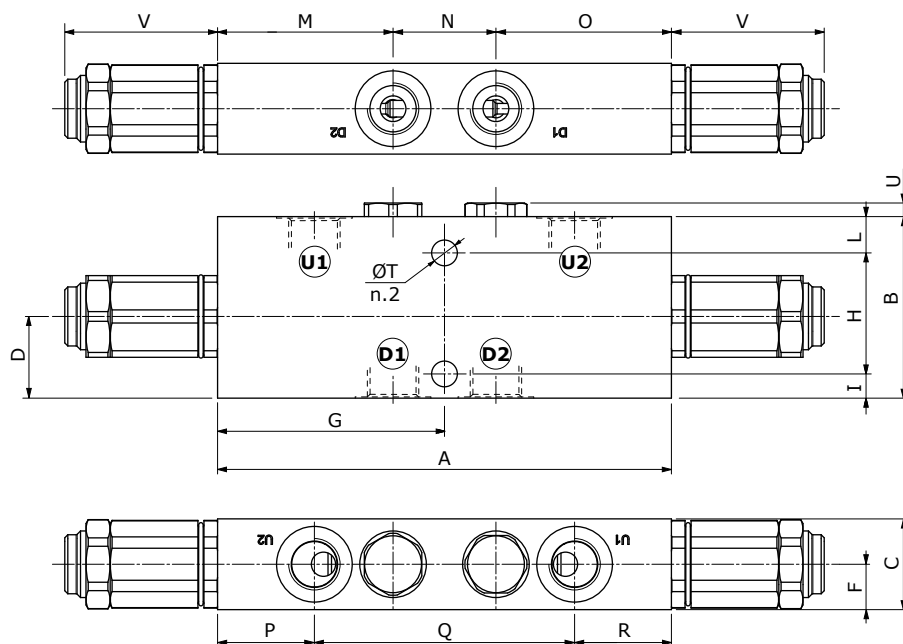
Technical specifications and diagrams are measured with mineral oil of 46 cSt viscosity at 40°C (104°F) temperature.

	VODL/SC/CC 38	VODL/SC/CC 12	VODL/SC/CC 34	VODL/SC/CC 100	
Nominal flow	40 l/min (10.6 US gpm)	75 l/min (18.5 US gpm)	120 l/min (31.7 US gpm)	180 l/min (47.6 US gpm)	
Max. pressure	Aluminium body = 210 bar (3050 psi) Steel body = 350 bar (5100 psi)				
Oil leakage	0.25 cm <sup>3</sup> /min - 0.015 in <sup>3</sup> /min. (5 drops) at 210 bar - 3050 psi at 80% of pressure setting				
Fluid	mineral based oil				
Viscosity	from 10 to 200 cSt				
Max. level of contamination	18/16/13 ISO4406				
Fluid temperature	with NBR seals from -20°C (-4°F) to 80°C (176°F)				
Environmental temp. for working conditions	from -40°C (-40°F) to 100°C (212°F)				
Weight	aluminium	1.14 kg (2.51 lb)	1.63 kg (3.59 lb)	2.37 kg (5.22 lb)	4.35 kg (9.59 lb)
	steel	2.18 kg (4.81 lb)	3.06 kg (6.75 lb)	4.85 kg (10.69 lb)	9.82 kg (21.65 lb)

NOTE - For different conditions, please contact Walvoil Sales Dpt.



### Dimensions



Valve type	D1	D2	U1	U2
VODL 38	G3/8	G3/8		
VODL 12	G1/2	G1/2		
VODL 34	G3/4	G3/4		
VODL 100	G1"	G1"		

Dimensions are in mm-in

Valve type	A	B	C	F	G	H	I	L	M	N	O	P	Q	R	ØT	U	V
VODL 38	150	60	30	15	75	40	8	12	58	34	58	32	86	32	8.5	4.5	50.5
	5.91	2.36	1.18	0.59	2.95	1.57	0.315	0.472	2.28	1.34	2.28	1.26	3.82	1.26	0.335	0.177	1.99
VODL 12	156	70	35	17.5	78	48	8	14	60	36	60	32	92	32	8.5	4.5	50.5
	6.14	2.76	1.38	0.69	3.07	1.89	0.315	0.551	2.52	1.89	2.52	1.26	3.62	1.26	0.335	0.177	1.99
VODL 34	186	90	40	20	93	70	10	10	68	50	68	34	118	34	10.5	5.5	50.5
	7.32	3.54	1.57	0.79	3.66	2.76	0.394	0.394	2.68	1.97	2.68	2.28	4.65	2.28	0.413	0.217	1.99
VODL 100	232	100	60	30	116	80	10	10	83	66	83	35	162	35	10.5	12.5	50.5
	9.13	3.94	2.36	1.18	4.57	3.15	0.394	0.394	3.27	2.60	3.27	1.38	6.38	1.38	0.413	0.492	1.99

### Ordering codes and description

#### VODL/SC/CC complete valves

TYPE: **VODL/SC/CC 38/TR.S.p4** CODE: 1565021102  
 DESCRIPTION: Aluminium body, G3/8 ports, pilot ratio 1:4, range 50-350 bar (725-5075 psi), std setting 280 bar (4060 psi) @ 5 l/min (1.32 US gpm)

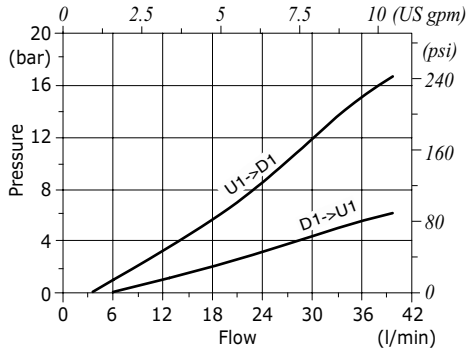
TYPE: **VODL/SC/CC 12/TR.S.p7** CODE: 1565031102  
 DESCRIPTION: Aluminium body, G1/2 ports, pilot ratio 1:7, range 50-350 bar (725-5075 psi), std setting 280 bar (4060 psi) @ 5 l/min (1.32 US gpm)

TYPE: **VODL/SC/CC 34/TR.S.p7** CODE: 1565041102  
 DESCRIPTION: Aluminium body, G3/4 ports, pilot ratio 1:7, range 50-350 bar (725-5075 psi), std setting 280 bar (4060 psi) @ 5 l/min (1.32 US gpm)

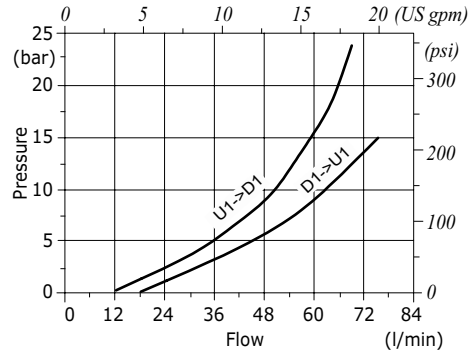
TYPE: **VODL/SC/CC 100/TR.S.p7** CODE: 1565051102  
 DESCRIPTION: Aluminium body, G1" ports, pilot ratio 1:7, range 50-350 bar (725-5075 psi), std setting 280 bar (4060 psi) @ 5 l/min (1.32 US gpm)

For other configurations and steel body, please contact our Sales Dept.

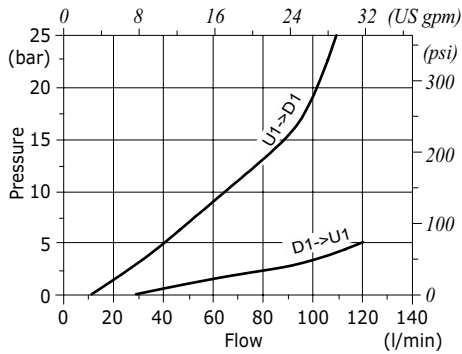
**VODL/SC/CC 38 pressure drop vs. flow from D1->U1 and U1->D1**



**VODL/SC/CC 12 pressure drop vs. flow from D1->U1 and U1->D1**



**VODL/SC/CC 34 pressure drop vs. flow from D1->U1 and U1->D1**



**VODL/SC/CC 100 pressure drop vs. flow from D1->U1 and U1->D1**

